

PERÜCKEN · WIGS · PERRUQUES · PELUCAS · PARRUCHE

Belle Madame[®]



NEWS 2024

by DENING HAIR 

PERÜCKEN · WIGS

NEWS SYNTHETIKHAAR SYNTHETIC HAIR



ROMY MONO HI SSF 6



COSMA MONO HI SF 8



CLARISSA MONO HI SF 10



SMILLA HI SF 12



TABEA HI SF 14



TERESA MONO HI SF 16



LYNN HI SSF 18

SHORT STYLES

ROMY MONO HI SSF	6-7
COSMA MONO HI SF	8-9

BOB STYLES

CLARISSA MONO HI SF	10-11
SMILLA HI SF	12-13

LONG HAIR STYLES

TABEA HI SF	14-15
TERESA MONO HI SF	16-17
LYNN HI SSF	18-19

BelleMadame
HAIR COLLECTION



MAXIMA SF 20

HAARTEIL SYNTHETIK HAIR PIECE SYNTHETIC

MAXIMA SF	20-21
-----------	-------



THE SWIFT 24



THE CLASSIC 26



THE SPLENDID 28



THE GRACE 30



THE DELIGHT 32



THE GLAMOROUS 34



THE ELEGANT LARGE 36



THE STARLET LARGE 37

PLATINUM HAAR PLATINUM HAIR

SHORT STYLES

THE SWIFT	24-25
THE CLASSIC	26-27

BOB STYLE

THE SPLENDID	28-29
--------------	-------

LONG HAIR STYLES

THE GRACE	30-31
THE DELIGHT	32-33
THE GLAMOROUS	34-35

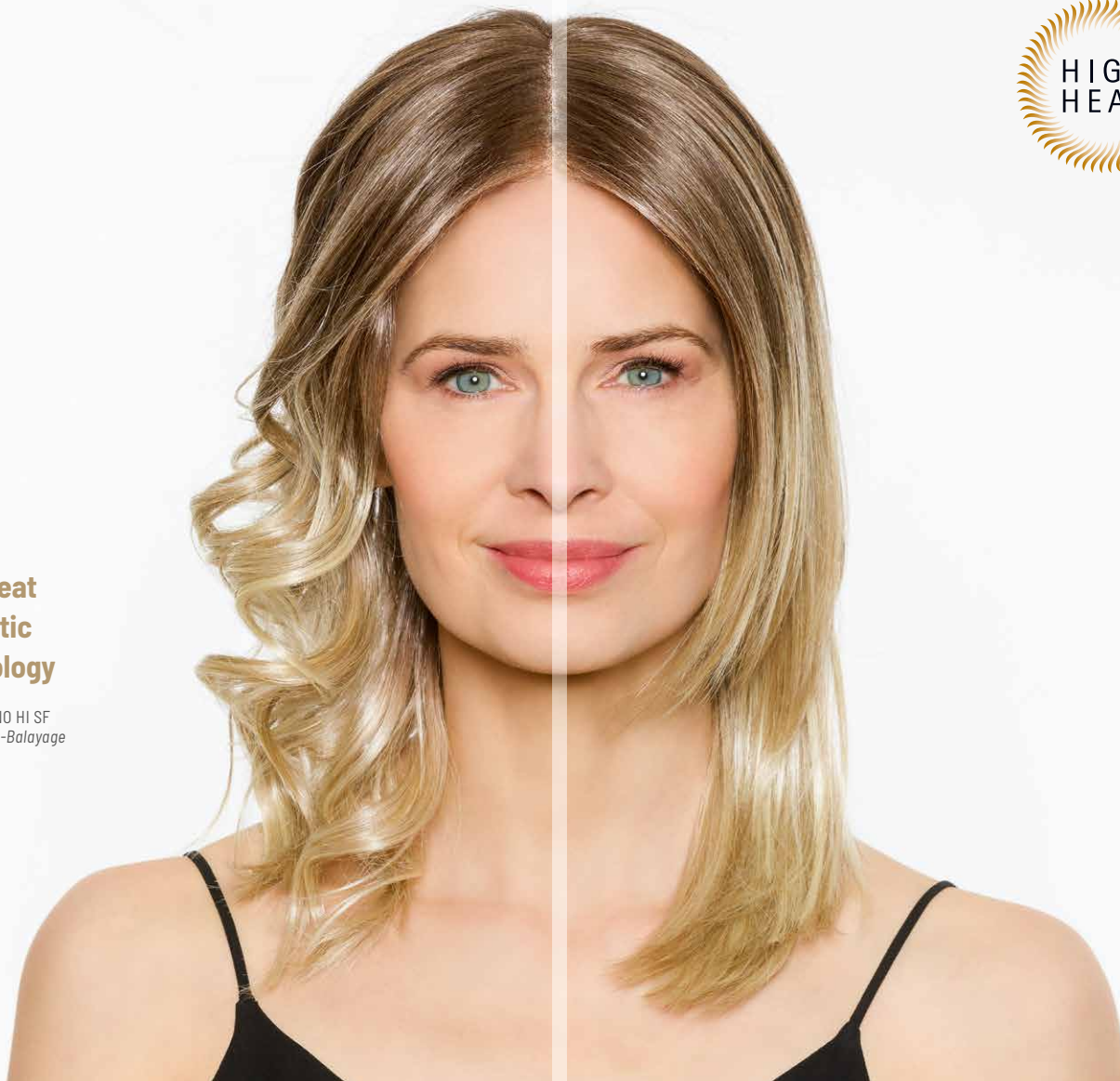
LARGE STYLES

THE ELEGANT LARGE	36
THE STARLET LARGE	37



High-Heat Synthetic Technology

TERESA MONO HI SF
Vanilla-Light-Balayage



VIelfALT NEU ENTDECKEN DISCOVER NEW VARIETY

- ✓ **Hitzebeständig:** Bis zu 180°C
- ✓ **Vielfalt:** Locken, Wellen oder glattes Haar lassen sich mit Wärme individuell kreieren.
- ✓ **Memory-Effekt:** Die Wunschfrisur bleibt auch nach der Haarwäsche erhalten.
- ✓ **Lebensdauer:** Spröde Spitzen lassen sich schnell wieder glätten.

- ✓ **Heat resistant:** Up to 180°C
- ✓ **Variety:** Create individual curls, waves or straight hair with heat.
- ✓ **Memory-effect:** The desired hairstyle is retained even after washing the hair.
- ✓ **Durability:** Brittle tips can be quickly smoothed out again.

Detaillierte Pflegehinweise beinhaltet
die High-Heat Pflegeanleitung
Detailed care instructions are contained
in the High-Heat care manual

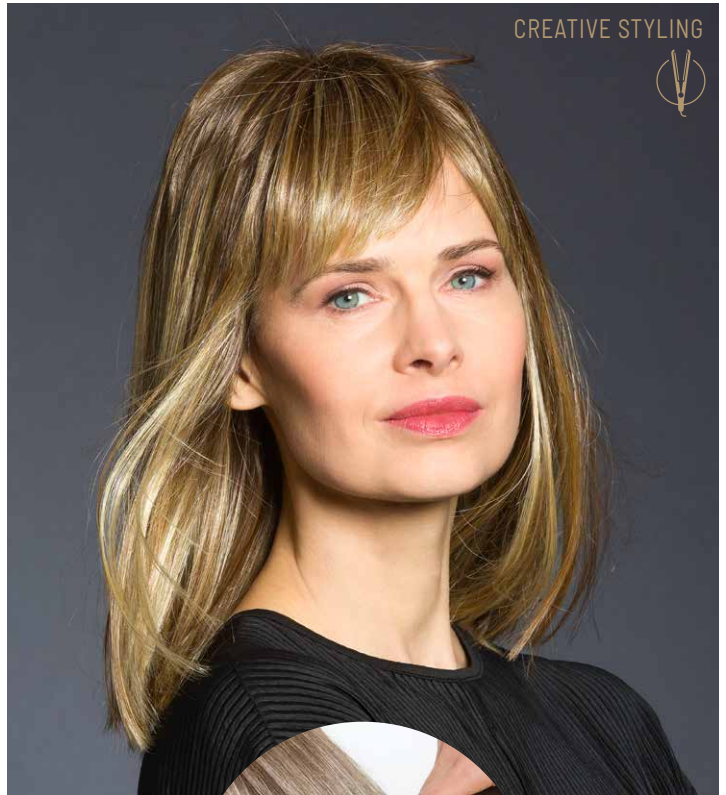


High-Heat Styling

A STYLISH MAKEOVER



TABEA HI SF Chocolate/Cream-Balayage



CREATIVE STYLING



Wavy Styling

Für Wellen oder Locken den Lockenstab für 30 - 40 Sekunden mit 110 - 120 °C im trockenen Haar verwenden.

For waves and curls use curler for 30 - 40 seconds in the dry hair at 110 - 120 °C.

Straight Styling

Zum Glätten oder Reparieren Glätteisen langsam mit 140 °C durch das trockene Haar ziehen.

To straighten or repair, slowly pass the straightener through the dry hair at 140 °C.



ROMY MONO HI SSF *Champagne-Root*



ROMY MONO HI SSF

●●●●○◀ M SOFT-SUPER-FRONT

Lace-Front = Swiss Lace

High-Heat-Fiber

BROWN COLOURS

- Dark-Mocca (4/6-4)
- Mocca-Brown (6/8/27R)
- Cold-Chocolate (5/8/14)
- Chocolate-Mix (8/10/27/20)
- Dark-Copper-Root (8/30/27+Root4)

BLOND COLOURS

- Chocolate/Cream-Root (10/27/20R+Root10)
- Honey-Toast (14/20/25R-12)
- Vanilla-Mix-Root (14/20/25R+Root10)
- Natural-Blond-Grey (16/18/101)
- Danish-Blond-Root (20R/22H+Root14)
- Champagne-Root (22H/22+Root12)
- Nordic-Ash-Blond (22/24R-16+Root14)

RED COLOURS

- Terracotta-Gold (8/27R-8)
- Paprika-Mix (32B/30/29)

GREY COLOURS

- Salt&Pepper-X (44/51/60+F60)
- 56/53-39
- Blond-Grey-Root (17/101+Root18)
- Snow-Blond-Root (101/16/60+Root10)
- 101/14-14

360°



ROMY MONO HI SSF
Chocolate-Mix



ROMY MONO HI SSF

ROMY MONO HI SSF Chocolate-Mix



COSMA MONO HI SF

COSMA MONO HI SF

●●●●●○◀ M

SUPER-FRONT

High-Heat-Fiber

BROWN COLOURS

- Espresso (2)
- Dark-Mocca (4/6-4)
- Mocca (6/10/30)
- Cold-Chocolate (5/8/14)
- Chocolate-Mix (8/27-4)

BLOND COLOURS

- Chocolate/Cream-Root (10/27/20R+Root10)
- Honey-Mix-Root (14/25R+Root12)
- Champagne-Mix-Root (23A/26+Root12)
- Swedish-Blond-Mix (25R/22H-20+Root16)
- Rose-Ash-Blond (24/23A/101+Rose)

RED COLOURS

- Terracotta-Gold (8/27R-8)
- Ruby-Mix-Root (33/32B/135/29+Root33)

GREY COLOURS

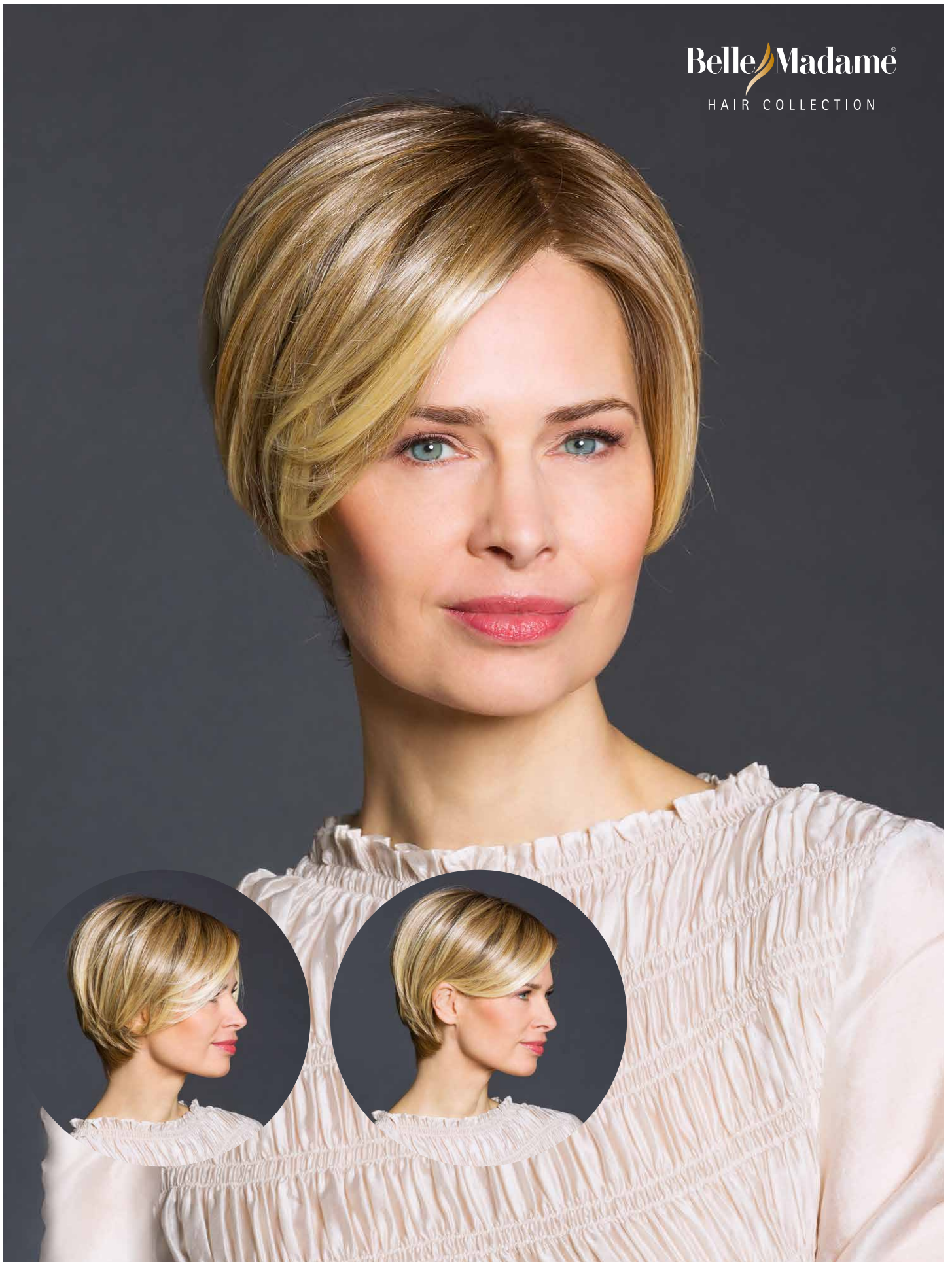
- Salt&Pepper (44/51/60)
- 60-56-51
- Platinum-Grey-Root (101/23/10+Root10)
- 101/14-14
- Violet-Silver + Light-Brown-Root

360°



COSMA MONO HI SF
Honey-Mix-Root

COSMA MONO HI SF Violet-Silver + Light-Brown-Root



COSMA MONO HI SF Honey-Mix-Root



CLARISSA MONO HI SF *Vanilla-Root*



CLARISSA MONO HI SF

●●●●●● < S/M

SUPER-FRONT

High-Heat-Fiber

BROWN COLOURS

- Espresso (2)
- Dark-Mocca (4/6-4)
- Mocca (6/10/30)
- Cold-Chocolate (5/8/14)
- Chocolate-Mix (8/27-4)

BLOND COLOURS

- Chocolate/Cream-Root (10/27/20R+Root10)
- Honey-Toast (14/20/25R-12)
- Vanilla-Root (14/22/22H+Root14)
- Chardonnay-Root (20R/27+Root12)
- Champagne-Root (22H/22+Root12)
- Swedish-Blond-Root (25R/22H+Root16)

RED COLOURS

- Ruby-Mix-Root (33/32B/135/29+Root33)
- Terracotta-Gold-Root (30/29+Root6)

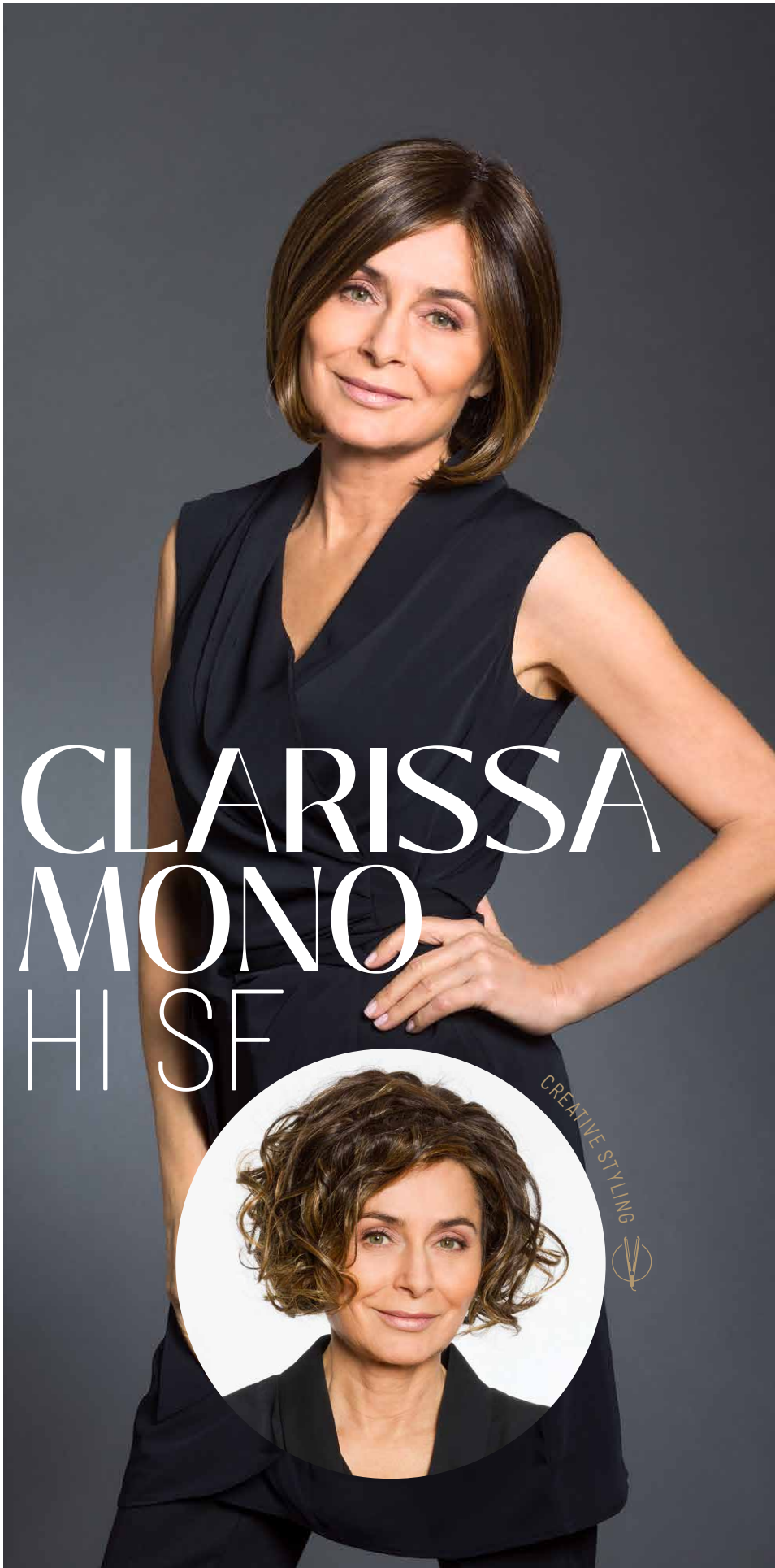
GREY COLOURS

- Salt&Pepper (44/51/60)
- 56/53-39
- 60/101
- 101/14-14

360°



CLARISSA MONO HI SF
Vanilla-Root



CLARISSA MONO HI SF



CREATIVE STYLING

CLARISSA MONO HI SF Chocolate-Mix



SMILLA HI SF

●●●○○○ ◀ M

SUPER-FRONT

Mono-Scheitel / Mono-Parting

High-Heat-Fiber

BROWN COLOURS

- Espresso (2)
- Dark-Mocca (4/6-4)
- Mocca (6/10/30)
- Chocolate (8/12/30)
- Chocolate-Mix (8/27-4)

BLOND COLOURS

- Chocolate/Cream-Balayage (10/27/25R+Root10)
- Honey-Toast (14/20/25R-12)
- Vanilla-Root (14/22/22H+Root14)
- Cool-Danish-Blond-Root (20/22H+Root14)
- Champagne-Root (22H/22+Root12)
- Swedish-Blond-Root (25R/22H+Root16)

RED COLOURS

- Ruby-Mix-Root (33/32B/135/29+Root33)
- Terracotta-Gold-Root (30/29+Root6)

GREY COLOURS

- Platinum-Grey-Root (101/23/10+Root10)

360°



SMILLA HI SF
Cool-Danish-Blond-Root

SMILLA HI SF Ruby-Mix-Root



SMILLA HI SF *Cool-Danish-Blond-Root*



TABEA HI SF

●●○○○○ ◀ S/M

SUPER-FRONT

HAARLÄNGE / HAIR LENGTH

18 - 33 cm

Mono-Wirbel / Mono-Crown

High-Heat-Fiber

BROWN COLOURS

- Espresso (2)
- Dark-Mocca (4/6-4)
- Mocca (6/10/30)
- Chocolate (8/12/30)
- Chocolate-Mix (8/27-4)

BLOND COLOURS

- Chocolate/Cream-Balayage (10/27/25R+Root10)
- Honey-Toast (14/20/25R-12)
- Vanilla-Root (14/22/22H+Root14)
- Vanilla-Light-Balayage (10/16/20/22+Root10)
- Champagne-Root (22H/22+Root12)
- Swedish-Blond-Root (25R/22H+Root16)

RED COLOURS

- Ruby-Mix-Root (33/32B/135/29+Root33)
- Terracotta-Gold-Root (30/29+Root6)

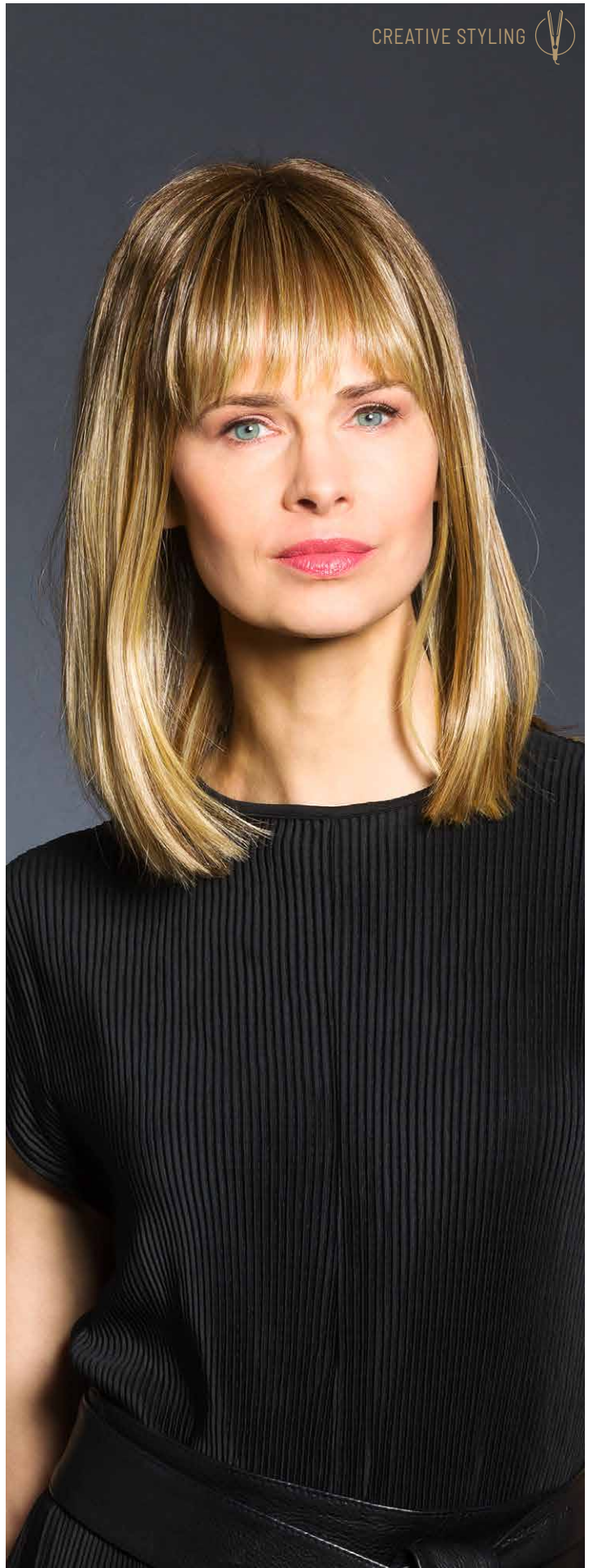
GREY COLOURS

- 60/101

360°



TABEA HI SF
Chocolate/Cream-Balayage



TABEA HI SF *Chocolate/Cream-Balayage*



TERESA MONO HI SF *Chocolate/Cream-Balayage*



TERESA MONO HI SF



SUPER-FRONT

HAARLÄNGE / HAIR LENGTH 30 cm

High-Heat-Fiber

BROWN COLOURS

- Espresso (2)
- Dark-Mocca (4/6-4)
- Mocca (6/10/30)
- Chocolate (8/12/30)
- Chocolate-Mix (8/27-4)

BLOND COLOURS

- Chocolate/Cream-Balayage (10/27/25R+Root10)
- Honey-Toast (14/20/25R-12)
- Vanilla-Root (14/22/22H+Root14)
- Vanilla-Light-Balayage (10/16/20/22+Root10)
- Champagne-Root (22H/22+Root12)

RED COLOURS

- Ruby-Mix-Root (33/32B/135/29+Root33)
- Terracotta-Gold-Root (30/29+Root6)

GREY COLOURS

- Platinum-Grey-Root (101/23/10+Root10)
- 101/14-14



TERESA MONO HI SF

360°



TERESA MONO HI SF
Chocolate/Cream-Balayage

TERESA MONO HI SF Platinum-Grey-Root



LYNN HI SSF Nordic-Ash-Blond



LYNN HI SSF

●●●○○○ ◀ M SOFT-SUPER-FRONT

HAARLÄNGE / HAIR LENGTH 33 cm

Lace-Front = Swiss Lace

Mono-Scheitel / Mono-Parting

High-Heat-Fiber

BROWN COLOURS

- Espresso (2)
- Dark-Mocca (4/6-4)
- Mocca-Brown (6/8/27R)
- Chocolate (8/12/30)
- Chocolate-Mix (8/10/27/20)
- Dark-Ash-Blond-Mix (10/12/14/8)

BLOND COLOURS

- Caramel-Root (12/27/20+Root8)
- Vanilla-Mix-Root (14/20/25R+Root10)
- Honey-Mix (14/20/25R)
- Natural-Blond-Grey (16/18/101)
- Danish-Blond-Root (20R/22H+Root14)
- Champagne-Root (22H/22+Root12)
- Nordic-Ash-Blond (22/24R-16+Root14)
- Swedish-Blond-Root (25R/22H+Root16)

RED COLOURS

- Rusty-Red (31/33)
- Terracotta-Gold-Root (30/29+Root6)

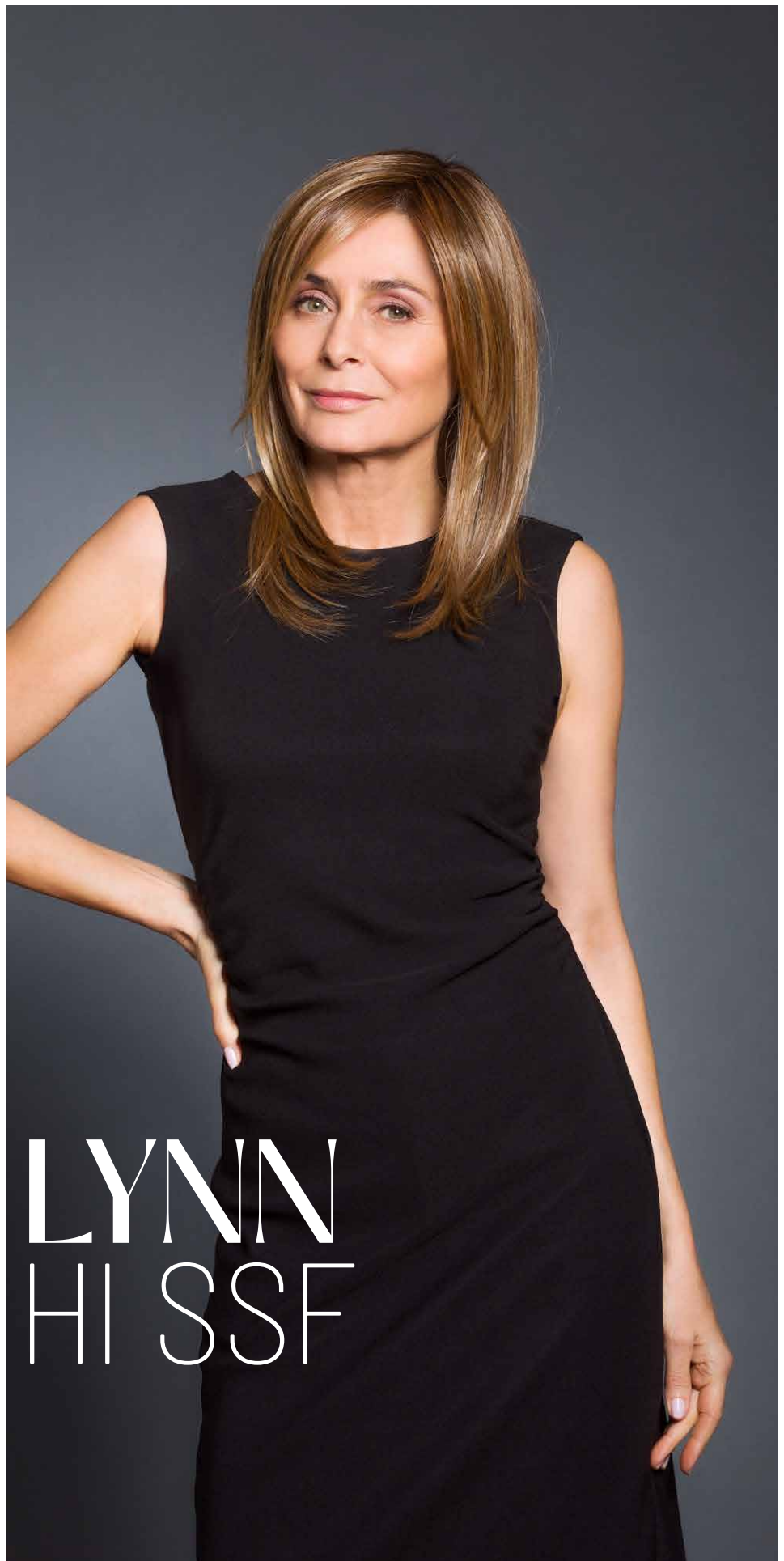
GREY COLOURS

- Blond-Grey-Root (17/101+Root18)
- 101/14-14

360°



LYNN HI SSF
Nordic-Ash-Blond



LYNN HI SSF

LYNN HI SSF Caramel-Root

MAXIMA
SF

MAXIMA SF



SUPER-FRONT

GRÖSSE / SIZE

23,5 x 26 cm

HAARLÄNGE / HAIR LENGTH

10 - 13 cm

Mononetz Haarteil mit 4 Clipsen,
SUPER-FRONT und Tressen von
Tempel-zu-Tempel.

Mono net hair piece with
4 clips, SUPER-FRONT
and wefts from
temple-to-temple.



BROWN COLOURS

- Dark-Mocca (4/6-4)
- Mocca (6/10/30)
- Cold-Chocolate (5/8/14)
- Chocolate-Mix (8/10/27/20)
- Dark-Ash-Blond-Mix (10/12/14/8)

BLOND COLOURS

- Chocolate/Cream-Root (10/27/20R+Root10)
- Honey-Mix (14/20/25R)
- Vanilla-Root (14/26+Root14)
- Natural-Blond-Grey (16/18/101)
- Champagne-Root (22H/22+Root12)
- Nordic-Ash-Blond (22/24R-16+Root14)

RED COLOURS

- Ruby-Mix (33/32B/135/29)

GREY COLOURS

- Salt&Pepper (44/51/60)
- 56/53-39
- 60-56-51
- Blond-Grey-Root (17/101+Root18)
- 101/14-14
- 101/60/51

PLATINUM HAIR

DAS BESTE AUS ZWEI WELTEN

PLATINUM HAAR ist ein Mix aus hochwertigem Remy Echthaar und High-Heat Kunsthaarfaser und vereint so das Beste aus zwei Welten.

DIE VORTEILE

- 1 PLATINUM HAAR ist weich, hat eine natürliche Optik und ist von Echthaar kaum zu unterscheiden.
- 2 PLATINUM HAAR hält die Frisur dank des Memory-Effekts der hitzebeständiger Kunsthaarfaser perfekt in Form.
- 3 PLATINUM HAAR ist optimal für glatte Frisuren. Die Haarstruktur bleibt nach der Haarwäsche und bei hoher Luftfeuchtigkeit glatt.
- 4 PLATINUM HAAR benötigt weniger Pflege- und Styling-Aufwand als Echthaar.
- 5 PLATINUM HAAR ist hitzebeständig bis 180 °C.
- 6 PLATINUM HAAR ist preisgünstiger als Echthaar bei vergleichbarer Lebensdauer.

THE BEST OF BOTH WORLDS

PLATINUM HAIR is a mix of high-quality Remy human hair and high-heat synthetic hair fibre and thus combines the best of both worlds.

THE ADVANTAGES

- 1 PLATINUM HAIR is soft, has a natural look and is almost indistinguishable from human hair.
- 2 PLATINUM HAIR has a memory effect due to the heat-resistant synthetic hair fibre which keeps the hairstyle in perfect shape.
- 3 PLATINUM HAIR is ideal for smooth hairstyles. The hair structure remains straighter after washing and in high humidity.
- 4 PLATINUM HAIR requires less care and styling than human hair.
- 5 PLATINUM HAIR is heat-resistant up to 180 °C.
- 6 PLATINUM HAIR is less expensive than human hair with a comparable durability.

PLATINUM HAIR LINE
Katalog
Catalogue

PLATINUM HAIR LINE
Pflegeanleitung
Care instructions



Belle Madame®

PLATINUM HAIR LINE

STYLING & PFLEGE

PLATINUM HAAR wird grundlegend gepflegt und gestylt wie Echthaar. Die BELLE MADAME NATURAL HAIR CARE Pflegeserie ist für PLATINUM HAAR optimal geeignet. Die Haarstruktur kann mit Wärme im trockenen Zustand bei 160 °C verändert (geglättet bzw. gelockt), gepflegt und repariert werden.

Verfilzungen im Nacken - welche ganz normal sind - können einfach und vor allem eigenständig zu Hause mit einem Glätteisen beseitigt werden, indem die Oberfläche der Haare geglättet wird.

BELLE MADAME SOFT SPRAY oder andere silikonhaltige Produkte dürfen nicht für PLATINUM HAAR verwendet werden. Der Silikonmantel, welcher sich um die Haare legt, erschwert die Umformung und Glättung des Kunsthaarteils.

Detaillierte Pflegehinweise beinhaltet die PLATINUM HAIR LINE Pflegeanleitung.

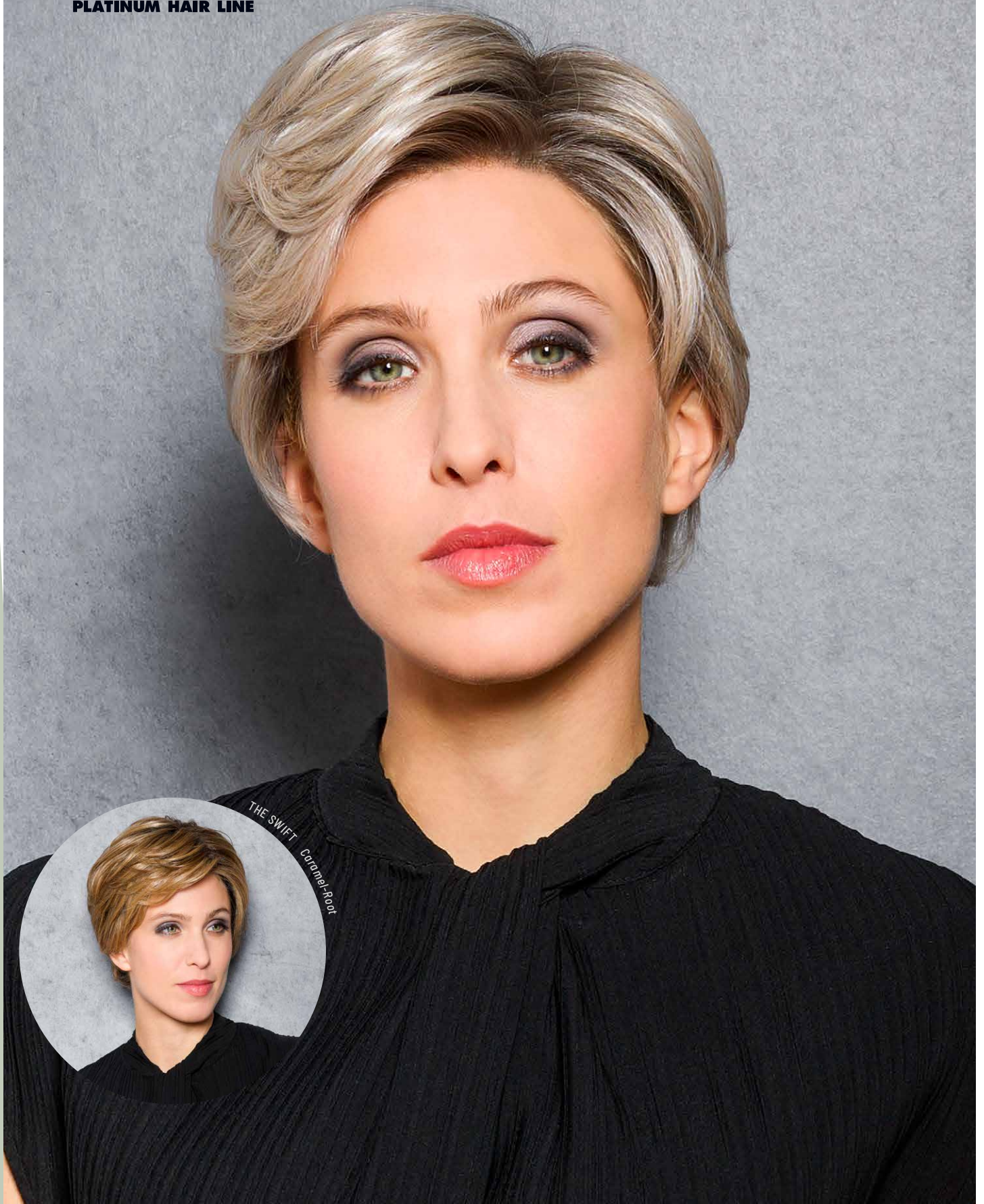
STYLING & CARE

PLATINUM HAIR is basically styled like human hair. The BELLE MADAME NATURAL HAIR CARE range is optimally suited for PLATINUM HAIR. The hair structure can be changed (straightened or curled), cared for and repaired with heat at 160 °C when dry.

Tangles in the neck - which are completely normal - can be eliminated easily and, above all, independently at home with a straightening iron by smoothing the surface of the hair.

BELLE MADAME SOFT SPRAY or other silicone containing products must not be used for PLATINUM HAIR. The silicone cover, which lays on the hair, can hinder the transformation and smoothing of the synthetic hair portion.

The PLATINUM HAIR LINE care instructions contain detailed care information.



THE SWIFT
Caramel-Root

THE SWIFT Pearl-Blond-Root

THE SWIFT

●●●●●○ ◀ **S/M** (53 - 55 cm)

SUPER-FRONT

HAARLÄNGE / HAIR LENGTH 5 - 7 cm

BROWN COLOURS

Dark-Mocca (4)

Mocca-Mix (6/10-6)

Chocolate-Mix-Root (8/10/27+Root8)

BLOND COLOURS

Medium-Blond-Mix-Root (10/12/20+Root10)

Caramel-Root (12/27/22H+Root10)

Light-Blond-Mix-Root (15/20/23+Root10)

Champagne-Root (20R/23+Root10)

Swedish-Mix (23A/25R/26)

RED COLOURS

Ruby-Mix (33/32B/135/29)

Light-Copper-Mix (30/27)

GREY COLOURS

Dark-Smoke-Grey (39/43+F56)

Salt&Pepper (51/44-44)

Smoke-Grey (43/56-39)

Pearl-Blond-Root (101/14+Root10)

THE SWIFT

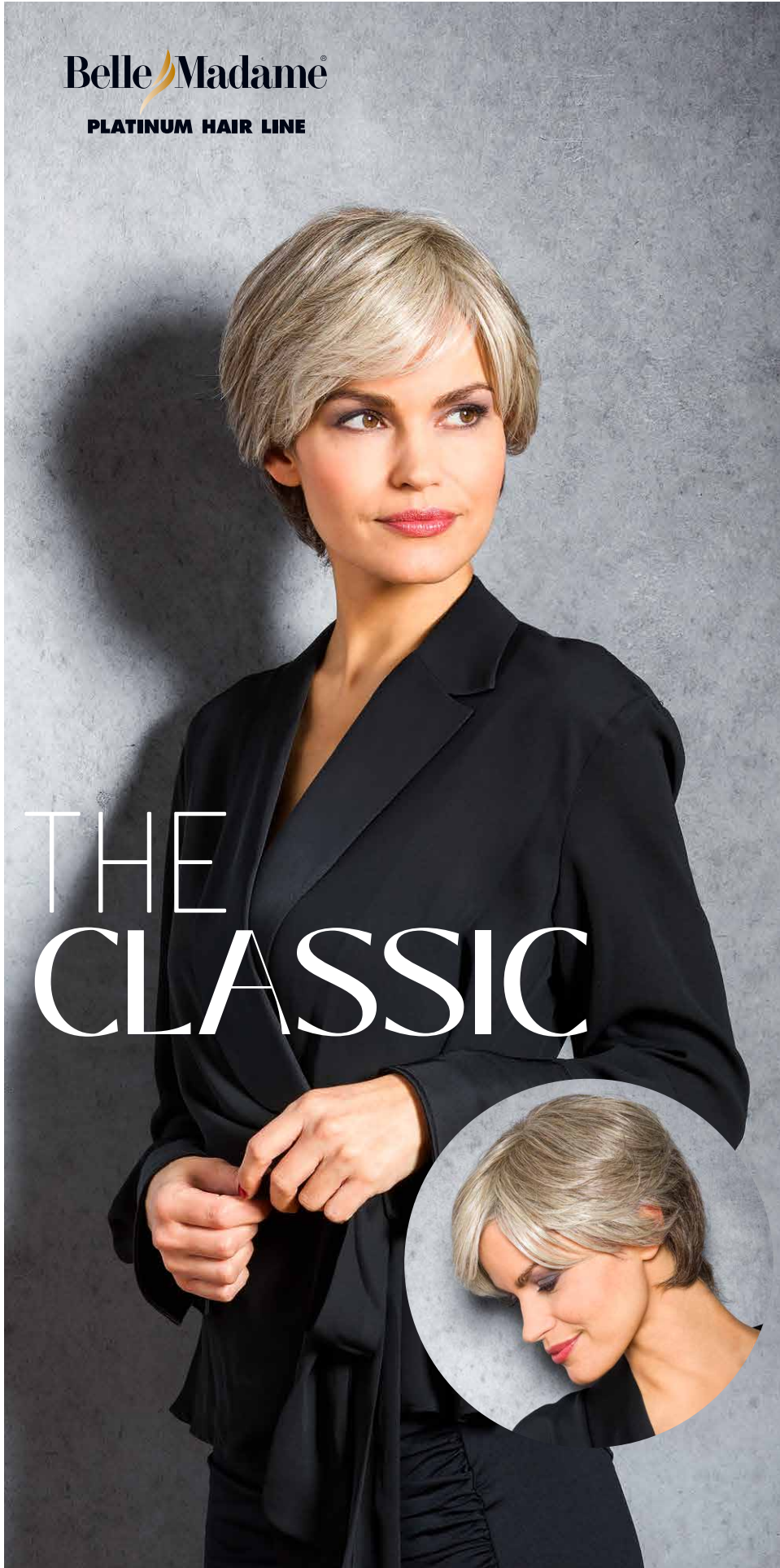
360°



THE SWIFT
Salt&Pepper



THE SWIFT Salt&Pepper



THE CLASSIC

●●●●● ◀ **S** (52 - 54 cm)

SUPER-FRONT

HAARLÄNGE / HAIR LENGTH 7 - 12,5 cm

BROWN COLOURS

Espresso-Mix (2/4)

Dark-Mocca-Mix (4/8)

Mocca-Mix (6/10-6)

Chocolate-Mix (8/10/27/20)

BLOND COLOURS

Medium-Blond-Mix-Root (10/12/20+Root10)

Caramel-Root (12/27/22H+Root10)

Vanilla-Light-Root (11/20/23-11+Root11)

Light-Blond-Mix (15/20/23+Root11)

Champagne-Root (20R/23+Root10)

Nordic-Ash-Blond (22/23-16+Root16)

RED COLOURS

Ruby-Mix (33/32B/135/29)

Light-Copper-Mix (30/27)

GREY COLOURS

Dark-Smoke-Grey (39/43+F56)

Salt&Pepper (51/44-44)

Smoke-Grey (43/56-39)

Pearl-Blond (101/14-14)

THE
 CLASSIC

360°



THE CLASSIC
 Champagne-Root



THE CLASSIC *Champagne-Root*



THE SPLENDID *Light-Blond-Mix-Root*

THE SPLENDID

●●●●●○ ◀ **S/M** (53 - 55 cm)

SOFT-SUPER-FRONT

Lace-Front = Swiss Lace

HAARLÄNGE / HAIR LENGTH 5 - 18 cm

BROWN COLOURS

Dark-Mocca (4)

Mocca-Mix (6/10-6)

Chocolate-Mix-Root (8/10/27+Root8)

BLOND COLOURS

Medium-Blond-Mix-Root (10/12/20+Root10)

Caramel-Root (12/27/22H+Root10)

Light-Blond-Mix-Root (15/20/23+Root10)

Champagne-Root (20R/23+Root10)

Swedish-Mix (23A/25R/26)

RED COLOURS

Ruby-Mix (33/32B/135/29)

Light-Copper-Mix (30/27)

GREY COLOURS

Dark-Smoke-Grey (39/43+F56)

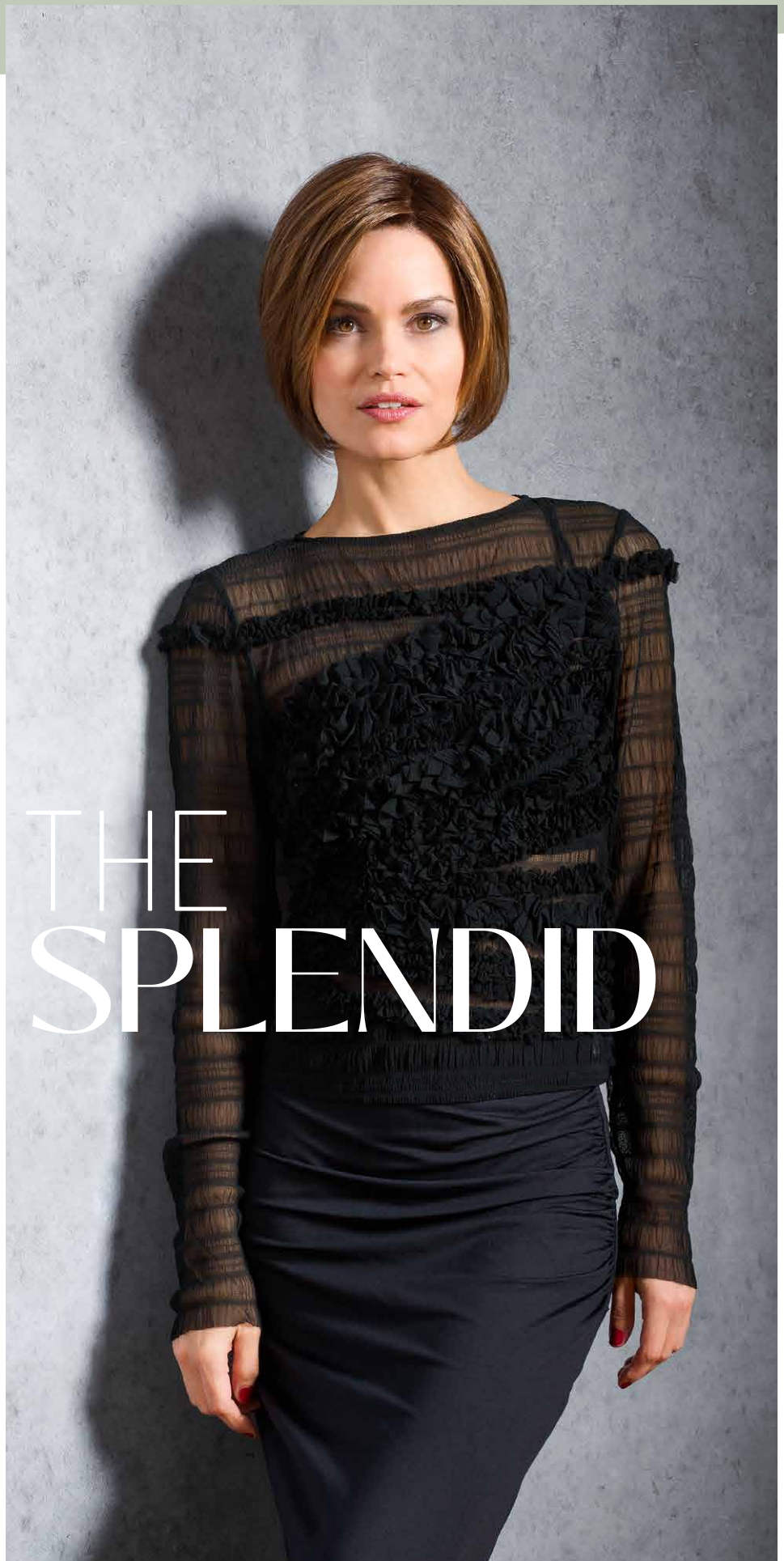
Salt&Pepper (51/44-44)

Pearl-Blond-Root (101/14+Root10)

360°



THE SPLENDID
Light-Blond-Mix-Root



THE SPLENDID *Chocolate-Mix-Root*

BelleMadame®
PLATINUM HAIR LINE



THE GRACE *Vanilla-Light-Root*

THE GRACE

●●●●● < **S/M** (53 - 55 cm)

SUPER-FRONT

HAARLÄNGE / HAIR LENGTH 35 cm

BROWN COLOURS

Espresso-Mix (2/4)

Dark-Mocca-Mix (4/8)

Mocca-Mix (6/10-6)

Chocolate-Mix (8/10/27/20)

BLOND COLOURS

Caramel-Root (12/27/22H+Root10)

Vanilla-Light-Root (11/20/23-11+Root11)

Light-Blond-Mix (15/20/23+Root11)

Champagne-Root (20R/23+Root10)

Nordic-Ash-Blond (22/23-16+Root16)

Swedish-Blond-Mix (25R/22H-20+Root16)

RED COLOURS

Ruby-Mix (33/32B/135/29)

Light-Copper-Mix (30/27)

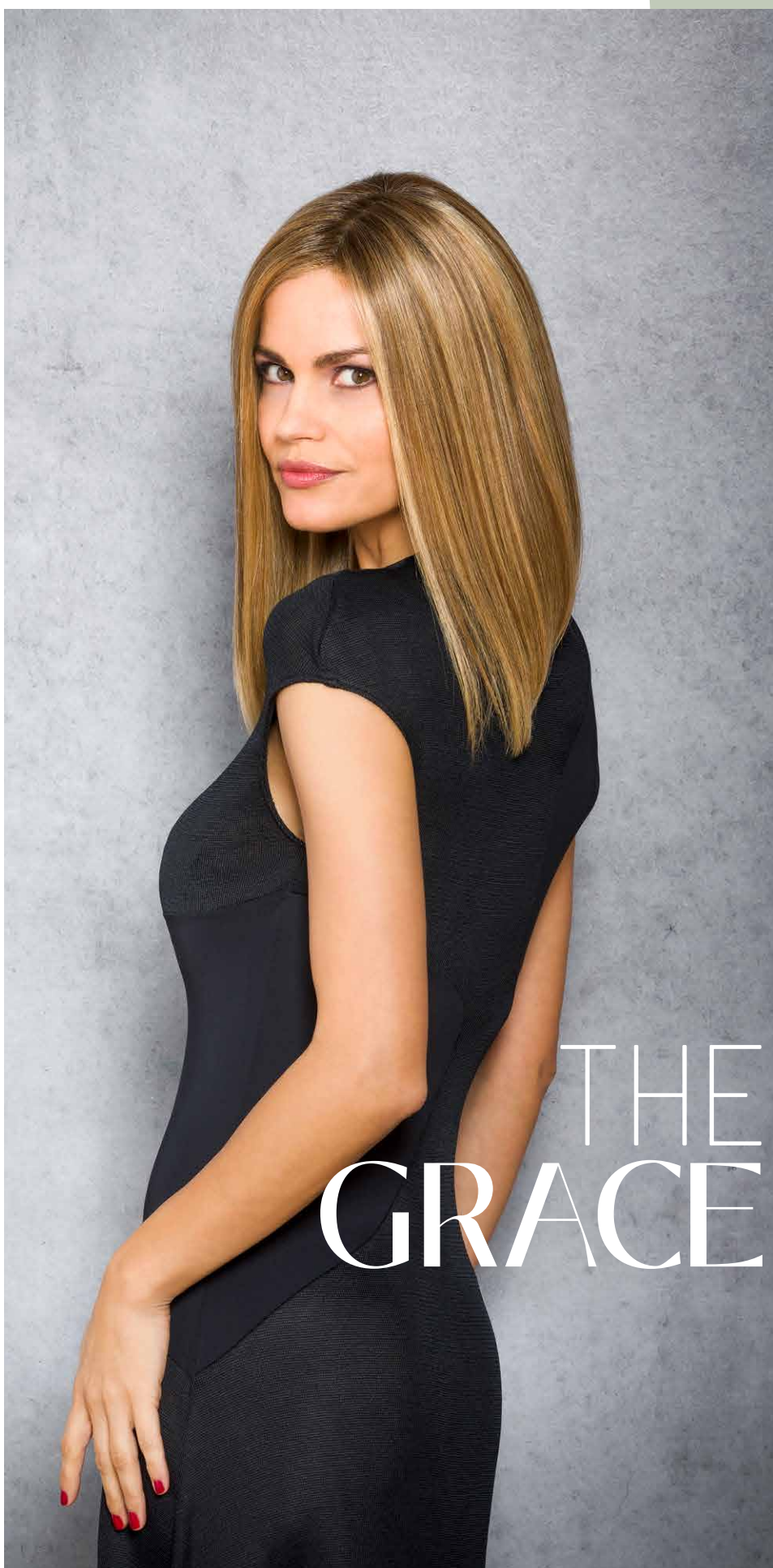
GREY COLOURS

Pearl-Blond (101/14-14)

360°



THE GRACE
Vanilla-Light-Root



THE GRACE



THE DELIGHT

●●●○○○ ◀ **S** (52 - 54 cm)

SUPER-FRONT

Mono-Scheitel / Mono-Parting

HAARLÄNGE / HAIR LENGTH 18 - 33 cm

BROWN COLOURS

Espresso-Mix (2/4)

Dark-Mocca-Mix (4/8)

Mocca-Mix (6/10-6)

Chocolate-Mix (8/10/27/20)

BLOND COLOURS

Caramel-Root (12/27/22H+Root10)

Vanilla-Light-Root (11/20/23-11+Root11)

Light-Blond-Mix (15/20/23+Root11)

Champagne-Root (20R/23+Root10)

Nordic-Ash-Blond (22/23-16+Root16)

Swedish-Blond-Mix (25R/22H-20+Root16)

RED COLOURS

Ruby-Mix (33/32B/135/29)

Light-Copper-Mix (30/27)

GREY COLOURS

Pearl-Blond (101/14-14)

360°



THE DELIGHT
Nordic-Ash-Blond

THE DELIGHT



THE DELIGHT *Nordic-Ash-Blond*

Belle Madame®
PLATINUM HAIR LINE



THE
GLAMOROUS

THE GLAMOROUS Vanilla-Light-Root

THE GLAMOROUS

●●●●● < **S/M** (53 - 55 cm)

SUPER-FRONT

HAARLÄNGE / HAIR LENGTH 45 cm

BROWN COLOURS

Espresso-Mix (2/4)

Dark-Mocca-Mix (4/8)

Mocca-Mix (6/10-6)

Chocolate-Mix (8/10/27/20)

BLOND COLOURS

Caramel-Root (12/27/22H+Root10)

Vanilla-Light-Root (11/20/23-11+Root11)

Light-Blond-Mix (15/20/23+Root11)

Champagne-Root (20R/23+Root10)

Nordic-Ash-Blond (22/23-16+Root16)

Swedish-Blond-Mix (25R/22H-20+Root16)

RED COLOURS

Ruby-Mix (33/32B/135/29)

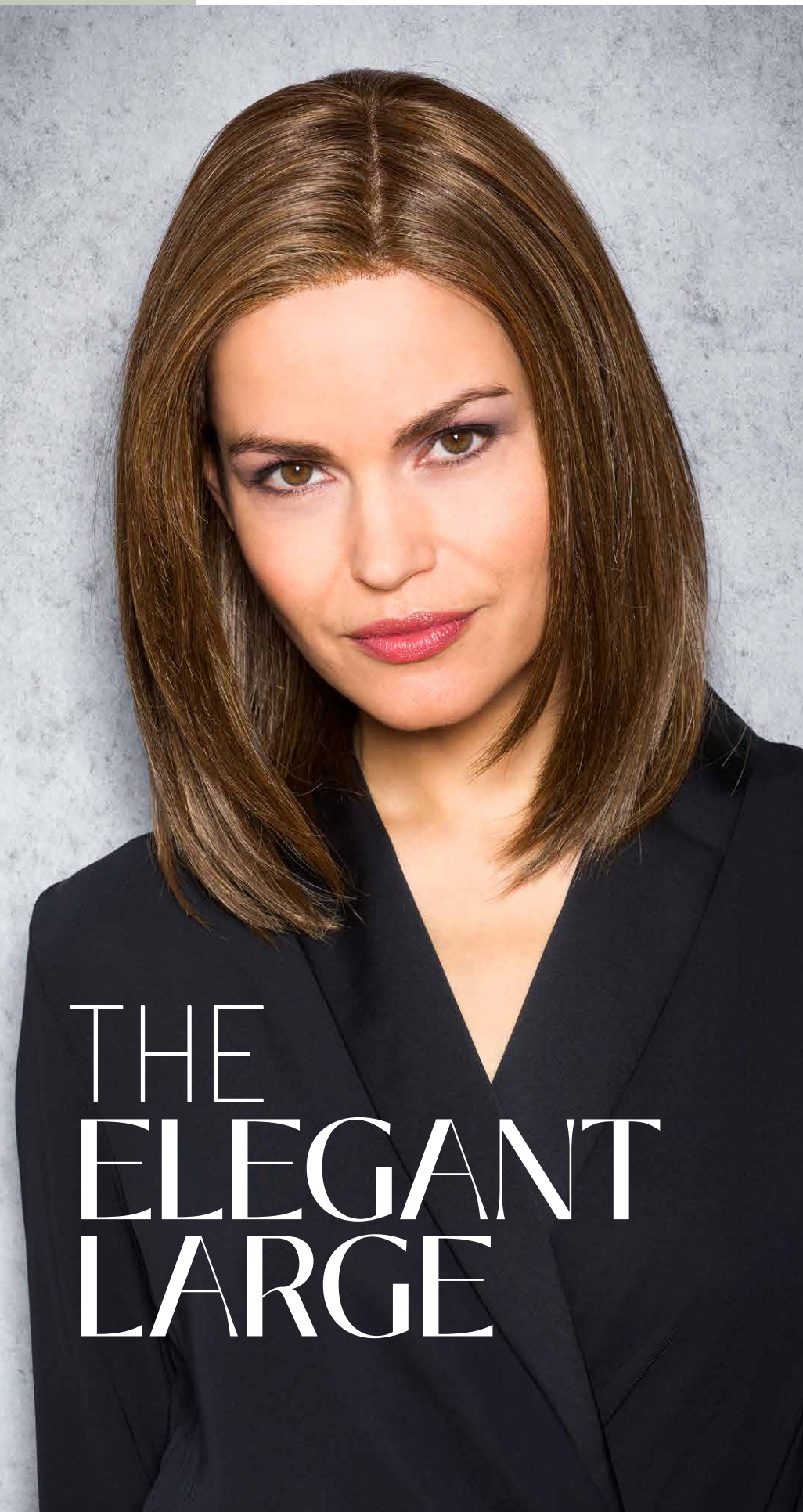
Light-Copper-Mix (30/27)

360°



THE GLAMOROUS
Vanilla-Light-Root





THE ELEGANT LARGE

THE ELEGANT LARGE

●●●●● < L/XL (57 - 59 cm)

SUPER-FRONT

HAARLÄNGE / HAIR LENGTH 14 - 32 cm

BROWN COLOURS

Espresso-Mix (2/4)

Dark-Mocca-Mix (4/8)

Mocca-Mix (6/10-6)

Chocolate-Mix (8/10/27/20)

BLOND COLOURS

Caramel-Root (12/27/22H+Root10)

Vanilla-Light-Root (11/20/23-11+Root11)

Light-Blond-Mix (15/20/23+Root11)

Champagne-Root (20R/23+Root10)

Nordic-Ash-Blond (22/23-16+Root16)

Swedish-Blond-Mix (25R/22H-20+Root16)

RED COLOURS

Ruby-Mix (33/32B/135/29)

Light-Copper-Mix (30/27)

GREY COLOURS

Smoke-Grey (43/56-39)

Pearl-Blond (101/14-14)

360°



THE ELEGANT LARGE
Chocolate-Mix

THE STARLET LARGE

●●●●●● < L (56 - 58 cm)

SUPER-FRONT

HAARLÄNGE / HAIR LENGTH 35 - 40 cm

BROWN COLOURS

Espresso-Mix (2/4)

Dark-Mocca-Mix (4/8)

Mocca-Mix (6/10-6)

Chocolate-Mix (8/10/27/20)

BLOND COLOURS

Caramel-Root (12/27/22H+Root10)

Vanilla-Light-Root (11/20/23-11+Root11)

Light-Blond-Mix (15/20/23+Root11)

Champagne-Root (20R/23+Root10)

Nordic-Ash-Blond (22/23-16+Root16)

Swedish-Blond-Mix (25R/22H-20+Root16)

RED COLOURS

Ruby-Mix (33/32B/135/29)

Light-Copper-Mix (30/27)



THE STARLET LARGE
Caramel-Root



THE
STARLET
LARGE

Dekobüste, abstrakt weiß

Decoration Head, abstract white



Art. 4005

Dekobüste, abstrakt weiß
aus Fiberglas, höhenverstellbarer Metallfuß (40 - 54 cm),
Kopfgröße 53 cm

*Decoration Head, abstract white
made of fibreglass, height-adjustable metal base (40 - 54 cm),
head size 53 cm*

· Ideal zur Präsentation von
Perücken und Turbanen

· *Ideal for wig and turban
presentation*

Dekobüste, abstrakt beige

Decoration Head, abstract beige



Art. 4006

Dekobüste, abstrakt beige

aus Kraftpapier, höhenverstellbarer Metallfuß (45 - 58 cm),
Kopfgroße 53 cm

Decoration Head, abstract beige

*made of kraft paper, height-adjustable metal base (45 - 58 cm),
head size 53 cm*

Anti Static Spray

Professional Hair Care



Art. 5064

Anti Static Spray

Antistatische Wirkung und Geschmeidigkeit
für Echt- und Kunsthaar

*Antistatic effect and smoothing
for human and synthetic hair*

Belle Madame
HAIR COLLECTION

by DENING HAIR



THE GLAMOROUS Vanilla-Light-Root ↻ Seite 34 / Page 34